

## Student exchange programs Academic Year 2023-2024

Useful information for erasmus and exchange students

**Luiss** Libera Università Internazionale  
degli Studi Sociali Guido Carli



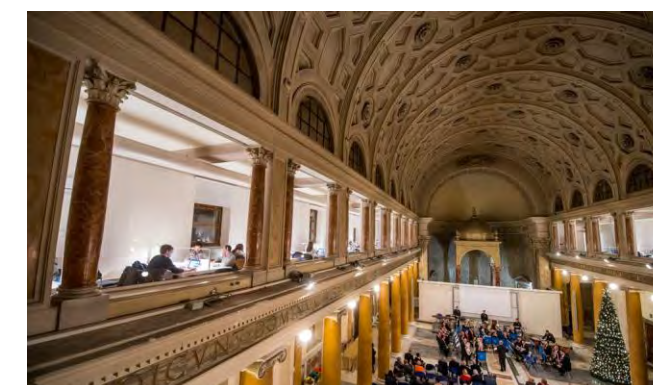


**Luiss Guido Carli University**  
The Student Mobility office

It is our pleasure to welcome you to our university and country and we hope you will enjoy your studies at Luiss Guido Carli University.

This guide is addressed to all Erasmus and Exchange students who are going to study at Luiss Guido Carli with the Erasmus program or a Bilateral Exchange program. In the following pages you will find a general description of Luiss and practical information. In this guide you should find the answers to many of the questions you may have.

More information can be found on the Luiss website, which is updated continuously. Detailed information about courses and study programs is available on the website and in the ECTS brochures in English. We look forward to meeting you in the near future.





# Table of contents

**The University**

**Academic offerings**

**Academic calendar**

**Luiss and the ECTS  
grading system**

**Luiss  
campuses**

**Where we are**

**Student services and  
facilities**

**The Student Mobility  
office**

**Why Luiss?**

**Exchange at Luiss**

**Administrative formalities**

**Getting around**

**Living in Rome**

**Student exchange partners**

# The University

Founded in 1974 by a consortium of private and public companies, Luiss Libera Università Internazionale degli Studi Sociali Guido Carli is a small independent University with high academic ranking. It has a policy of selective admission and quality of its academic standards and emphasizes the international dimension of its programs. The main campus is in the beautiful area of Parioli. Luiss is affiliated with Confindustria (the confederation of Italian Industry) and is a leader in Italy in the fields of

economics, law and social sciences. The University's mission is specifically tailored to its students: to educate and train an internationally oriented managerial class with a business ethos for enterprises, government, the professions and research. Today, Luiss offers an advanced educational model, strongly oriented towards the needs of the global market and new professions, with a singular vocation to select the best. The objective of the Luiss model is not only to transmit knowledge, but above all, to teach flexibility.



## Strengths

- Set number of students for all degree programs
- Rigorous entrance exam
- Compulsory full-time attendance
- Organization of courses into semesters
- Top-class professors and lecturers
- Intensive study of foreign languages and computer training
- Large specialized library
- Extensive network of international student exchanges
- Orientation for high school students
- Assistance from qualified tutors
- Seminars and debates on important issues to complement lectures

## Key figures

# 9955

students enrolled

# 2

schools

# 4

departments

# 1:7

teacher/student ratio

# 58

double degrees, LLM Educational Programs and Structured Partnerships

# 2354

Incoming and outgoing exchange students

# 315

international partners in 62 countries

## Academic offerings

The University has two Schools that offer undergraduate and graduate degree programs.

The Undergraduate School and the Graduate School, namely, offer studies in the following areas: Management, Economics, Finance, Law,

and Political science organized in three-year Bachelor's Degree Programmes (180 ECTS credits) and two-year Master's Degree Programmes (120 ECTS credits). The main Law program is a five-year single cycle Master's degree (300 ECTS credits).



### Area of Business and Management

**Bachelor's Degree in Economics and Management (Ita)**

**Bachelor's degree in Management and Computer science (English)**

**Master's degree in Businessmanagement**

– Entrepreneurship and Innovation (Ita)

– Organization and Human resource management (Ita)

**Master's degree in Strategic Management**

**Accounting, Control and Finance (Ita)**

**Master's degree in Strategic Management**

**Master's degree in Corporate finance (English)**

**Master's degree in Management**

– Innovation and entrepreneurship (English)

– International management (English)

– Luxury, fashion and made in italy (English)

**Master's degree in Marketing**

– Marketing analytics & metrics (Ita/English)

– Market relationships & customer engagement (Ita/English)

**Master's degree in Global Management and Politics**

**Area of Economics and Finance**

**Bachelor's degree in economics and business**

– Management (English)

– Economics (English)

– Finance (English)

**Master's degree in economics and finance**

– Banks and financial intermediaries (Ita)

– Economics (English)

– Finance (English)

### Area of law

**Five-year master's degree programme in law**

– Civil law (Ita)

– Law and economics (Ita)

– Company and tax law (Ita)

– Criminal law (Ita)

– Administrative law (Ita)

– International law (Ita)

– Labour and social security law (Ita)

**Eu law and regulation (English)**

**Law and Innovation (English)**

**Master's degree in Law, Digital Innovation and Sustainability (English)**

### Area of political science

**Bachelor's degree in**

**Political Science**

– Politics, philosophy and economics (English)

– Political science (Ita)

**Master's degree in International Relations**

– International relations (Ita)

– European studies (English)

– Global studies (English)

**Master's degree in Government and Politics**

– Communication and new media (Ita)

– Institutions and politics (Ita)

– Public politics (Ita)

– Public policies (English)



# Academic calendar

### First Semester - Fall

Mandatory arrival/online orientation date: For all incoming exchange students	September 7, 2023
Classes begin	September 11, 2023

Classes end	December 2, 2023 12 weeks of classes
Examination period	From 4 December to 21 December 2023 One examination date for all first semester courses
Examination period	From 8 January to 3 February 2024

Christmas Holidays from 22 December 2023 to 7 January 2024

### Second Semester - Spring

Mandatory arrival/orientation date: For all incoming exchange students	February 1, 2024 Student Mobility Office, viale Romania 32 Campus
Classes begin	February 5, 2024

Classes end	4 May 2024, 13 weeks of classes
Examination period	From 6 May to 27 June 2024

Easter Holidays 28 March – 2 April 2024

Please note that the resit examination period in September is only open to Erasmus/Exchange students upon special request to the Student Mobility Office.

# Luiss and the ects grading system

Individual courses are graded on a scale of 18/30. Exceptional students may be awarded 30 cum laude (30 e lode).

## Distribution of bachelor level grades

The minimum passing grade is 18/30. Grades below 18 are considered failing and are not registered.

### Area of Business and Management

Luiss Grades	Distribution	Definition
30 e lode	5,35%	
30	14,45%	Excellent
29	6,29%	Very good
28	12,60%	
27	12,02%	Good
26	9,54%	
25	8,45%	
24	7,97%	Satisfactory
23	4,92%	
22	4,09%	
21	3,26%	
20	3,62%	
19	2,26%	
18	5,19%	Sufficient
<18	/	Fail
Total	100%	

### Area of Economics and Finance

Luiss Grades	Distribution	Definition
30 e lode	7,37%	
30	12,92%	Excellent
29	10,01%	Very good
28	10,55%	
27	8,83%	Good
26	9,09%	
25	7,65%	
24	7,57%	Satisfactory
23	5,17%	
22	4,40%	
21	3,69%	
20	3,78%	
19	2,82%	
18	6,14%	Sufficient
<18	/	Fail
Total	100%	

### Area of Political Science

Luiss Grades	Distribution	Definition
30 e lode	9,59%	
30	20,22%	Excellent
29	11,41%	Very good
28	15,18%	
27	12,20%	Good
26	8,36%	
25	6,24%	
24	4,67%	Satisfactory
23	2,86%	
22	2,21%	
21	1,47%	
20	1,96%	
19	0,95%	
18	2,71%	Sufficient
<18	/	Fail
Total	100%	

## Distribution of master level grades

### Area of Business and Management

Luiss Grades	Distribution	Definition
30 e lode	7,32%	
30	22,21%	Excellent
29	14,20%	Very good
28	20,47%	
27	14,38%	Good
26	8,36%	
25	4,26%	
24	4,00%	Satisfactory
23	1,68%	
22	0,92%	
21	0,56%	
20	0,59%	
19	0,28%	
18	0,76%	Sufficient
<18	/	Fail
Total	100%	

### Area of Economics and Finance

Luiss Grades	Distribution	Definition
30 e lode	10,01%	
30	22,25%	Excellent
29	13,26%	Very good
28	15,61%	
27	11,85%	Good
26	7,31%	
25	5,37%	
24	3,85%	Satisfactory
23	2,33%	
22	1,15%	
21	1,52%	
20	1,43%	
19	0,85 %	
18	3,20%	Sufficient
<18	/	Fail
Total	100%	

### Area of Political Science

Luiss Grades	Distribution	Definition
30 e lode	16,15%	
30	27,29%	Excellent
29	16,94%	Very good
28	17,30%	
27	9,33%	Good
26	5,39%	
25	3,03%	
24	1,87%	Satisfactory
23	0,93%	
22	0,54%	
21	0,32%	
20	0,28%	
19	0,17%	
18	0,47%	Sufficient
<18	/	Fail
Total	100%	

### Area of Law

Luiss Grades	Distribution	Definition
30 e lode	6,78%	
30	27,26%	Excellent
29	5,89%	Very good
28	18,97%	
27	14,08%	Good
26	8,93%	
25	6,0%	
24	4,52%	Satisfactory
23	2,29%	
22	1,41%	
21	0,92%	
20	1,22%	
19	0,49%	
18	1,17%	Sufficient
<18	/	Fail
Total	100%	



## Viale Romania 32

- Office of the General Manager Office of the Rector
- Department of Economics and Finance
- Department of Business and Management
- Department of Political Science
- Biography of the Student
- University Language Center
- ERS and Students' Development Student Mobility office
- Orientation and Entrepreneurship Radio Luiss
- Research, Teaching and Employability Student Office
- Summer School
- International Development
- Research and PhD Programs
- Shop



## Viale Pola 12

- Office of the General Manager Office of the President
- Office of the Rector
- Department of Law
- Massimo Baldini School of Journalism
- Finance and Network Development
- General Counsel, Industrial Relations and IT
- Governance, Risk Management and Studies Office Luiss University Press
- External Relations and Events Human Resources
- Press and Public Relations

## Via Parenzo 11

- Department of Law

## Villa Blanc, via Nomentana 216

- Luiss Business School

## Via di Santa Costanza 53

- Library and Cultural Activities

## Via Tommaso Salvini 2

- Luiss Sport
- Career Services
- Digital Communication and New Media IT Development
- Luiss Cast

## Via di Villa Emiliani 14

- School of Government
- School of European Political Economy

## Viale Gorizia 17

- Alumni
- Compliance, Internal Audit and Risk Management Network Development and Financial Aid

## Via Marsala 29H

- Luiss ENLABS

## Via Massimo D'Azeglio 3 20154 Milano

- Milano Luiss Hub for makers and students

# Where we are

1. Viale Romania 32



2. Via Tommaso Salvini 2



3. Villa Blanc



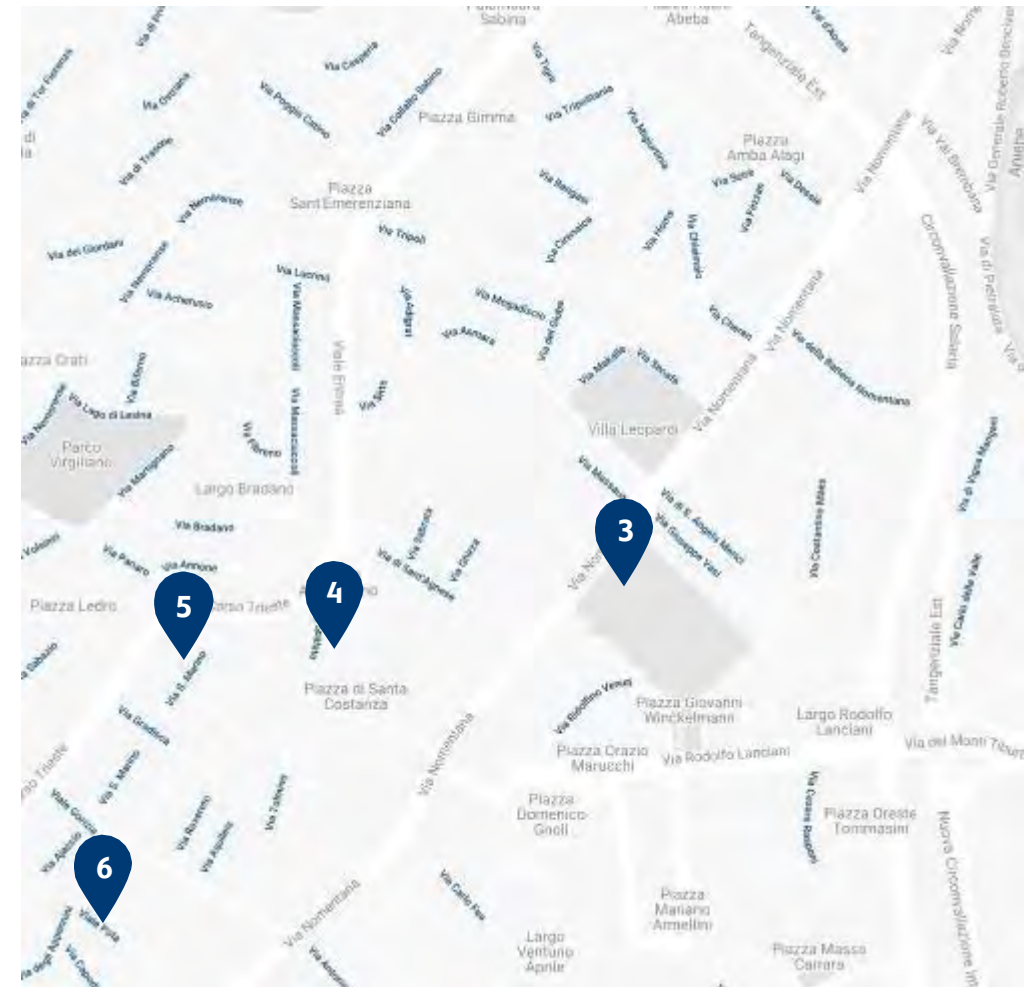
4. Via di Santa Costanza 53



5. Via Parenzo 11



6. Viale Pola 12



# Student services and facilities

Studying at Luiss Guido Carli means becoming part of a dynamic and international community that shares academic endeavors, enthusiasm and experience.

Students take on an active role in their education and can count on a close relationship with faculty members.



## Student facilities include

- Orientation services and tutoring
- A specialized library that may also be accessed online through the University's web site Two University canteens
- Free medical service and emergency medical assistance
- Computer rooms equipped with internet access and email for all students Interactive multimedia services
- Access to the wireless network
- Cultural activities such as: conferences, cinema, theatre, literature and music Italian language courses
- A sports club
- A University radio and web TV
- A shuttle bus

## The student office

The Student Office supports and supplies students with all the information they need for their academic life. The Office takes care of the following: enrollment; admission to degree courses; payment of fees; scholarships - financial aid; sitting examinations; choosing a study plan; degree examination; changing degree course and transferring from another university.

## The library

The library is specialized in social sciences, particularly in law, economics and political science. It holds about 120,000 books, over 2,000 paper journals (1,100 of which are current issues), 75 databases, and it provides access to over 30,000 e-journals. In 1999-2000, the library received two valuable donations, from Ungari with approximately 10,000 volumes specialized in human rights, and from Fondo Puija, specialized in criminal law.

## The career services office

The Career Services Office offers an orientation and a professional training service for all Luiss final year students and recent graduates. It provides help and support in approaching the job market. The Career Services Office organizes internships and apprenticeships, offers professional orientation services, counseling, assessment days, seminars on CVs, job and career days and gives employers assistance in searching and selecting CVs.

## Cultural activities

Luiss Guido Carli organizes photography and writing contests, theater labs and other cultural activities in which Luiss students can take part. The University also has agreements with a number of theaters in Rome, offering students cut price tickets or discount season tickets.

## Luiss language café

The Luiss Language Café is a multilingual centre for creativity and cultural exchange and will serve as a hub of activity for sharing knowledge, skills and initiatives that will involve everyone throughout the university. In the open lounge of the café, as well as enjoying the free tea and coffee, students can browse through a wide range of prominent international

## Luiss LOFT

newspapers and magazines, but also ask for a reservation of the theatre or one of the 3 production rooms.

The Luiss LOFT is a hub for students, staff, professors and PhD candidates to explore and stimulate their creativity while delving into tech culture, creativity, design and digital production. The LOFT's calendar of events ranges from the Internet of Things, design and coding to songwriting and digital skills to open new horizons and contribute to innovative living on campus.

## Sports

The goal of Luiss Sports is to make students participate and feel part of a community through sports. You can practice all kinds of sports at Luiss, such as basketball, soccer, volleyball, rugby and athletics. Sports activities take place at the University sports center PALALuiss, at the Acqua Acetosa field, and the CUS field.

Luiss Sports Office:  
+39 06 85 22 54 00  
sport@luiss.it

## Shuttle bus

A free shuttle bus links the Social Science campus to the Law campus.

## The university radio and webtv

The University web radio, set up in 2006, is run entirely by students. It offers entertainment, good music, cultural programs, news, interviews and much more. All students are welcome to take part in the radio's activities and some programs are also held by Erasmus incoming students. In September 2008 Luiss launched its WebTV.

## University canteen

There are two canteens at Luiss Guido Carli and they offer meals on weekdays and lunch on Saturdays. They are located at the two campuses: viale Pola 12 and viale Romania 32.

# The Student Mobility office

The Student Mobility office promotes student exchanges within the Erasmus+ Program as well as through Bilateral Agreements with non-European partner universities.

The office is responsible for all aspects of student mobility in all areas of study. It also deals with orientation and registration of in-coming students within exchange programs.

All procedures are based on the ECTS system (European Credit Transfer System).

The Student Mobility office is located in Viale Romania 32 - 00197 Roma. Except for urgent matters, incoming students should contact the staff of the office as follows: Monday to Friday: from 10 am to 12 pm - Tuesdays and Thursdays from 3 pm to 4 pm.

Annamaria A. Ricciardi  
Head of Student Mobility

Michele Sorrentino  
+39 06 85 22 53 89  
msorrentino@luiss.it

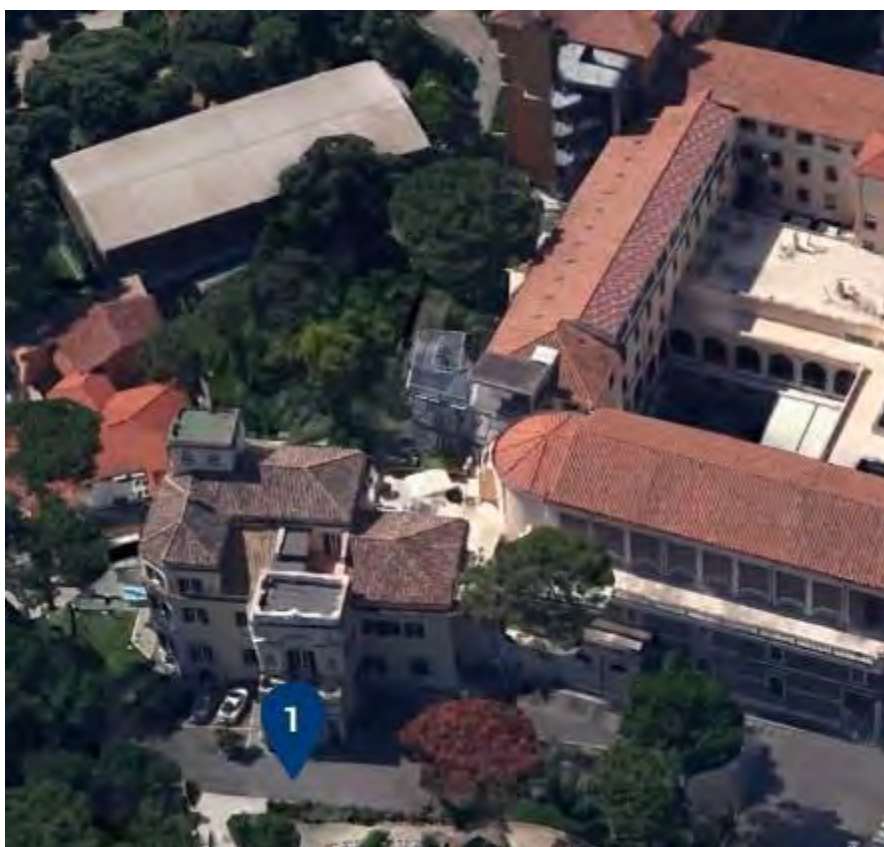
Roberta Limone  
+39 06 85 22 57 78  
rlimone@luiss.it

Simone Paratore  
+39 06 85 22 57 77  
sparatore@luiss.it

Anna Liguori  
+39 06 85 22 57 22  
aliguori@luiss.it

Stefania Ruccia  
+39 06 85 22 57 79  
relint@luiss.it

Marina Riccardi  
+39 06 85 22 56 13  
relint@luiss.it



# Why Luiss?

- Because it is a small independent university with about 10000 students.
- Because admission is merit-based.
- Because there is a limited number of students per class, to ensure favorable learning conditions.
- For the excellent reputation and high quality education.
- Because exchange students will be given access to all courses at bachelor and master level from any area of study.
- Because of the support in finding housing given by the Accommodation Office to students who apply by our dead-line.
- To enrich your cv from an international point of view and to gain new academic perspectives.
- Because Luiss has a strong sense of community and offers various activities:
- Sports, university radio, web tv, drama courses, and much more!
- To exchange ideas with students from many different countries and cultures and to live in a multicultural atmosphere.
- Because of the very good facilities offered to students.
- For your personal and intellectual growth.
- To increase your awareness of diversity and to understand how flexible you are.
- Because study programs are organized in specific professional areas.
- Because professors and lecturers are selected from the academic world, the professions, the state and private management.
- For the extensive network of international partners.
- Because Luiss is in the heart of Rome.

# Exchange at Luiss

## Who can apply?

If your university has a bilateral agreement with Luiss Guido Carli (under the Erasmus+ Program or another exchange agreement), you can apply through the International Office of your Institution. The first thing to do is to contact the coordinator at your home university.

### **If your university does not have an exchange agreement with Luiss:**

You can enroll in individual courses (corsi singoli). In this case, you have to pay a fee of €1,300 for each course. In order to enroll, please read the information available on the website and contact the Student Office/ Segreteria Studenti: [segreteria@luiss.it](mailto:segreteria@luiss.it) or [segreteriamagistrali@luiss.it](mailto:segreteriamagistrali@luiss.it). You can also enroll for a full degree program. To enroll, please read the information available on the website and contact the Student Office/ Segreteria Studenti: [segreteria@luiss.it](mailto:segreteria@luiss.it) or [segreteriamagistrali@luiss.it](mailto:segreteriamagistrali@luiss.it).

## Things you should know

### **COVID-19 notice**

Throughout the Fall 2022 semester at Luiss classes have been held mostly in-person with only a few courses taught exclusively online.

All in-person courses are also streamed online, making it possible to effectively attend a virtual semester of studies remotely.

By the end of January of every academic year, we send all our partners updated materials, application procedures and documents for exchange students. You should ask the coordinator of your university for the following information and Luiss application documents:

- The registration and application steps for exchange students 2023-2024
- The 2023-2024 academic calendar.
- The 2023-2024 fact sheet.
- Information on how to get accommodation at Luiss and the application form for housing.

Read the instructions carefully before you apply.

Search our web site from time to time: pages are updated when new information is available. Check the web pages of Luiss Professors (under Search for courses) for detailed information about courses.

Luiss offers extensive Italian language courses in both semesters to exchange students. The courses are at three levels (beginner, intermediate and advanced) and they are free of charge.

At Luiss the language of instruction are Italian and English. Information about the degree programs taught entirely in English can be found on our website.

## Luiss language requirements for exchange students

Luiss student exchange agreements are based on mutual trust in selecting students and language proficiency certified by each home institution.

Students selected for an exchange should be proficient in the language of instruction at the host university. With **most of our partners** we have agreed that language proficiency will be certified by each home university, confirming that the level is adequate. **Students will not be required to submit the results of an official language test for the exchange program.**

**From our partner universities with whom we have not agreed on a language certificate waiver we will require proof of language proficiency for English and/or Italian to study at Luiss.**

Non-native speakers of English or Italian should provide the following proof of proficiency:

For Italian	For English:
	IELTS score a minimum of 6
	TOEFLIBT score a minimum of 78/80
<b>Bachelor and Master Level</b>	Cambridge – FCE Level
A minimum of B2 according to the CEFR or equivalent.	- grade B
	Cambridge – CAE Level
	- grade C
Italian language proficiency can be certified by home university.	IELTS and TOEFL must be valid, they expire after two years.

## Steps to apply

### First step: nomination

If you have been selected to study at Luiss as an exchange student, **first of all you must be nominated by your home university. (Nomination deadline: 9 May for both I and II semester)**

### Second step: registration

After being nominated by the home university, exchange students will receive an e-mail with an access code (token) and instructions to register in our on-line Web Self-Service Platform. Students must register to the Web Self-Service. **(Registration deadline: 15 May)** Enter the access code, first name, last name and date of birth. The information entered must match the data we received from home university.

If registration is successful, students will be allowed to login to the system using the newly assigned username and password. We recommend saving this page, print it, or note down the credentials for future use (a copy will also be sent to the students e-mail address).

By logging into the system students will be able to proceed to the next step.

### Third step: application

From the Web Self-Service user page, in the left-hand pane, students should click on Study abroad > Application Form for Incoming students (Erasmus/Exchange).

Students will have to upload a scan of the following (we suggest to prepare scans in this phase):

- A recent photograph (35X40mm, max 5MB, in jpeg, jpg, bmp or pjpeg)\*
- ID card (for Schengen countries) or passport for non-EU students\*
- Updated transcript of records in English.\*
- A provisional Learning Agreement signed by the home university

coordinator\* (for Erasmus students)

- Language certificates (if required, check with home university)

- You can apply for housing through the Luiss Accommodation Office. You will find the link to the form while filling out your application to Luiss

#### \*Compulsory attachments

Luiss will not require a paper file of the application documents however students should print and keep a copy of the provisional learning agreement and of the enrolment credentials form with username and password. They will need them after arrival to access their personal Luiss Web Self-Service page.



## Acceptance letters

From the beginning of June, as soon as application forms are processed, Student Mobility will send the incoming students an acceptance letter and practical information via e-mail.

## Application deadline for II semester

Please note that Luiss does not accept a second round of selected students for the II (Spring) semester, after the summer.

**Very few exceptions can be made and they have been agreed on with the partners involved.**

## ESN Roma Luiss

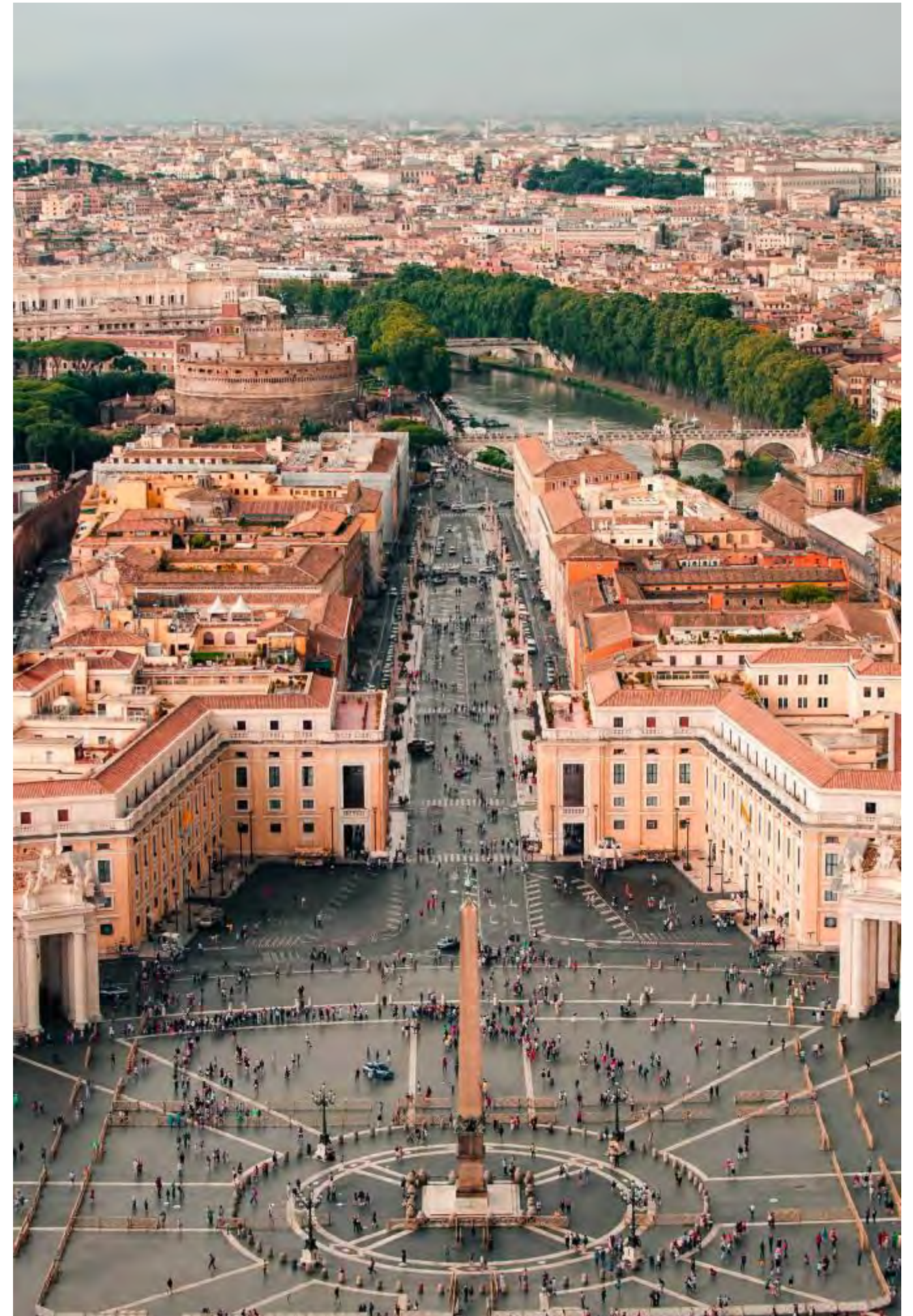
This is a recently established section of one of the biggest interdisciplinary student associations in Europe: the **Erasmus Student Network (ESN)**. The volunteers who created and are running this section are proudly committed to the social and practical integration of international students coming to **Luiss University** and are actively working under the ESN mission's principle "students helping students".

The goal of the association is to make each exchange student's time in Rome and at Luiss University unforgettable by supporting diversity, promoting an international outlook and involving the students in many activities. ESN also provides relevant information and encourages the future exchange students to gain international experience and insight into different cultures.

### Contacts

Tuesdays and Thursdays  
from 6:00pm to 8:00pm  
@ the Luiss Language Café  
(Viale Romania, 32 - 3rd floor)

Via di Trasone, 56  
c/o Collegio Universitario Don Nicola Mazza  
info@esnromaluiss.it





# Administrative formalities

## Visa and permit of stay for non-Schengen citizens

Non-Schengen citizens should go to the Italian diplomatic offices (embassy or consulate) and apply for a Study Visa as soon as they receive their letter of admission from Luiss Guido Carli University.

If you are unsure whether you need a visa to enter Italy, please visit:

<https://vistoperitalia.esteri.it/home/en>

There is a list of Italian embassies and consulates on the Ministry of Foreign Affairs website:

<http://www.esteri.it/MAE/EN/Ministero/LaReteDiplomatica/Ambasciate/default.htm>

Within 8 days from arrival, students must apply for a permit of stay. To do so, they must bring:

- The acceptance letter
- A declaration of sufficient means of support
- An original bank statement
- Private health insurance valid in Italy (Please note that private insurance from home countries is not accepted at the Questura, unless an official document from the Italian embassy or consulate for the home country states the insurance's validity)

Detailed information on how to apply for a permit of stay will be given upon your arrival.

All exchange students are required to have an insurance policy (translated in Italian) covering medical care and third-party liability, valid on the national territory for a year or for the period of stay in Italy. For students from countries that are members of the European Union some medical costs are generally covered by their national health service. All European students should have the European Health Insurance Card – EHIC.

## Insurance

### COVID-19 notice

We encourage all exchange students travelling to Italy to make sure that you have adequate travel insurance coverage, and that your insurance includes coronavirus related issues.



# Getting around

## Public transportation

Rome has an integrated public transport network operated by the companies ATAC – Cotral – FS-Ferrovie dello Stato. The system includes a network of metro, bus, tram and metro-type rail service. Bus and tram services (ATAC) cover the centre of the city and the suburbs. They operate from 5:30 am to 12:00 Pm. Night bus service is available from midnight to 5:30 am. Night busses are recognized by the number followed by the letter N (notturno).

There are three metro lines, A, B and C which connect extraurban and peripheral zones with the center.

- Metro line A runs from Battistini Station, situated northwest of the city, to Anagnina Station in the southwest. Trains circulate from 5:30 am to 11:30 pm (until 1:30 am on Fridays and Saturdays).

- Metro line B runs from Rebibbia station, situated north-east of the city, to Laurentina Station to the south. Trains circulate from 5:30 am to 11:30 pm (until 1:30 am on Fridays and Saturdays).

- Metro line C runs from Parco di Centocelle station to Monte Compatri - Pantano Station to the south. Trains

circulate from 5:30 am to 23:30 pm.

The only station where you can transfer from line A to line B is Termini Station.

A shuttle train called the Leonardo Express, leaving every 30 minutes (from 6:37 am to 11:37 pm) links Fiumicino International Airport with Termini Central Station. The price of the ticket is €14 for one ride.

For information about bus and tram service (ATAC) you can call the number 06 57 003 or check the website [www.atac.roma.it](http://www.atac.roma.it). Information can also be found in Tuttocittà, a street map which is issued annually along with Rome telephone directories. You can also ask at any tourist information stand for a free map of the transportation network.

## Taxis

Single tickets (€1.50) allow you to use all means of public transportation within the metropolitan area of Rome for up to 100 minutes.

Monthly passes cost €35 and last for the calendar month, so we recommend buying them at the beginning of the month.

Note: Single or monthly tickets must be bought before boarding the bus. They can be purchased at ATACKiosks (at the end of the line), newsstands, tabacchi (tobacco shops) or from automatic ticket machines. Single tickets must be validated when you begin your journey.

Validation machines are located at the rear of buses and trams, at the entry gates of metro stations and within the entrance area of all rail stations.

Taxis in Rome are quite expensive; charges vary by distance, time of day and extra charges (supplementi). A taxi is, however, the easiest form of transportation for students arriving in Rome at Fiumicino International Airport (average fare about €50). To order a taxi call +39 06 35 70; +39 06 39 70; +39 06 58 70; +39 06 49 94.



## Money

On January 1st, 2002 the Euro was introduced as legal currency in Italy, substituting the Italian “Lira”. Banks are usually open from Monday to Friday from 8:30 am to 1:00 pm and from 2:45 pm to 3:45 pm. If you wish to open a bank account in Italy you will first have to obtain your Codice Fiscale (taxpayer’s code number). Credit cards are widely accepted in restaurants, hotels, railway stations and shops. We recommend that students bring along a sufficient amount of Euros or travelers checks to cover immediate necessities (keep in mind that there are considerable delays involved in transferring money to Italy from abroad!).

### Cost of living

**Housing & Utilities**  
Shared Room: €450  
Single Room: €500-800  
Studio: €700-1200  
Utilities: €50 (if sharing the expenses with 2-3 flat mates)

**Groceries**  
Food and household items: €80-100 per month

**Leisure**  
Cocktails: €6-20  
Aperitivo (Happy hour): €8-15  
Cinema: €4,50-10  
Restaurant: €20-40  
Pizzeria: €10-5

## Libraries

A large number of libraries are located in Rome. The most important libraries are:

– Luiss University Library, Via di Santa Costanza 54, 00198. It holds a collection of 100,000 books, including a collection of 1,500 current and past newspapers and magazines. The collection concentrates on economics, law and politics.

Opening hours: Monday to Friday 8:30 am to 9 pm; Saturday 8:30 am to 13:45 pm.

– The Central National Library of Rome (Biblioteca Nazionale Centrale di Roma), Viale Castro Pretorio 105, 00185, tel. +39 06 49 891; fax +39 06 44 57 635, website: <http://www.bnrcrm.librari.beniculturali.it>, email: [bnrcrm@cosput.it](mailto:bnrcrm@cosput.it)

– Biblioteca Universitaria Alessandrina, Piazzale Aldo Moro 5, 00185, tel. +39 06 44 74 021, e-mail: [alessandrina@librari.beniculturali.it](mailto:alessandrina@librari.beniculturali.it).

## Accommodation

Student Mobility does not take direct responsibility for providing accommodation. The Luiss Accommodation office takes care of it on the basis of the web application forms received (by the Student Mobility of Luiss Guido Carli) by the application deadline.

Most Erasmus students live in private apartments with Italian or international roommates in the neighborhoods near the University. The average cost is between €350-400 for a place in a double room and €450-600 for a single room per month plus utilities (telephone, electricity, heating, gas). Ask your coordinator for a copy of the accommodation documents. Please read the booking conditions carefully, follow the instructions and complete the application form.

Students that wish to take care of housing themselves are advised to come to Rome at least one week before the arrival date.

### Useful links for accommodation:

[www.portaportese.it](http://www.portaportese.it)  
[www.airbnb.com](http://www.airbnb.com)  
[www.affittaroma.it](http://www.affittaroma.it)  
[www.collegiuniversitari.it](http://www.collegiuniversitari.it)  
[www.Bed-Breakfast.net](http://www.Bed-Breakfast.net)  
[www.cercasicasa.it](http://www.cercasicasa.it)

## Emergency numbers

In case of emergency call 112 (Carabinieri), 113 (Police), 115 (Fire Brigade), 116 (ACI Road Assistance), 118 (Ambulance). These calls are free. Other emergency numbers can be found in the opening pages of the yellow pages (Pagine Gialle).

## Electricity

Electric current in Italy is 220 volts. You might need an adaptor and/or a converter.

## Entertainment

Cinema. Tickets cost about €8-9 (with a reduced price of about €5 for students). Movies in English are shown at the New Olympia in Via del Corso.

Theatre and concerts: tickets generally vary between €15 and €40. Many associations give reductions to students. Tickets at reduced prices are sold at Luiss Guido Carli on a weekly basis. For detailed information call the University Union, or Diritto allo Studio, Viale Gorizia 17, 00198 Roma, Tel. +39 06 85 22 54 10.

## Embassies and Consulates

Most embassies are located in Rome. There are consulates in the smaller cities. Check your Ministry of Foreign Affairs for their diplomatic missions in Italy.

## Post offices

Post offices (Poste Italiane, [www.poste.it](http://www.poste.it)) are open Monday to Friday from 8:30 am to 13:30 pm and Saturday from 8:30 am to noon. Some offices in the center have longer opening hours; closing time is between 6 pm and 7 pm. Stamps can also be bought at the tabacchis.

## Phone services

The Italian phone network is run by Telecom Italia and various other companies (Infostrada, Tele 2, Fastweb). Public phones are run by Telecom, they take coins or Telecom phone cards are available at shops called tabacchis, indicated by a big T outside. For mobile phones, if you have a cell phone you can buy a SIM card for about €10 with several companies (TIM; WINDTRE; VODAFONE) and choose a calling plan for the duration of your stay. Local calls cost around 15C. per minute.

## Climate and clothing

Italy extends 1,200 km from north to south, so the climate varies considerably, with winter temperatures of -5°C and below (23°F) in the north, and summer temperatures of 40°C (105°F) in the south. Rome, located at the center of the peninsula, has a mild climate, with temperatures rarely reaching the extremes indicated above. Consequently, light or medium-weight clothing is recommended. It is advisable, however, to bring a raincoat, and an overcoat or heavy jacket for the winter which can get cold.

## Holidays

January 1 New Year's Day  
January 6 Epiphany  
March 31 Easter Sunday (2024)  
April 1 Easter Sunday (2024)  
April 25 Liberation Day  
May 1 Labor Day  
June 2 Republic Day  
June 29 St. Peter and Paul  
August 15 Assumption Day  
November 1 All Saints  
December 8 Immaculate Conception  
December 25 Christmas Day  
December 26 St. Stephen's Day

## Tourism

The city of Rome offers a wide range of interesting possibilities, thanks to its unique richness of history, culture and art. Visitors will have the amazing opportunity to travel through history while walking on its streets: daily life doesn't just offer superb views of the Coliseum, Fontana di Trevi, the Roman Forum, Piazza di Spagna or the Pantheon, but also hides ancient secrets and modern charms in the narrow streets of the city center.

For information, the best places to make inquiries are the Tourist Information Offices located all over the centre and in the main transport terminals.

## Information about Rome

Good sources of information about streets, monuments, museums, places of entertainment, commercial activity, and shopping are Tuttocittà and Pagine Gialle. Both are issued along with telephone directories, so you might find one in your apartment.

It is advisable to buy a good map of the city. Another good source of information about what is going on in Rome is Trovaroma, a weekly publication which is given out with the Thursday edition of the newspaper La Repubblica. Many other newspapers offer similar publications (Corriere della Sera, Roma C'è).

### Useful links

#### Italy

[www.italia.it/en/home.html](http://www.italia.it/en/home.html)  
[www.study-in-italy.it](http://www.study-in-italy.it)

**Ministry of Foreign Affairs**  
[www.esteri.it/MAE/EN](http://www.esteri.it/MAE/EN)

**Rome**  
[www.turismoroma.it/](http://www.turismoroma.it/)

**Public transportation and maps**  
[www.atac.roma.it](http://www.atac.roma.it)  
[www.trenitalia.it](http://www.trenitalia.it)  
[www.tuttocitta.it](http://www.tuttocitta.it)

# Student exchange partners

## 2023-2024

### Australia

Queensland University of Technology

### Argentina

Universidad Torcuato di Tella - UTDT  
Universidad Argentina De La Empresa - UADE  
Universidad de Belgrano  
Universidad de San Andrés

### Austria

Universitaet Wien  
Wirtschaftsuniversitaet Wien Wu  
Central European University

### Belgium

Université Libre De Bruxelles  
Katholieke Universiteit Leuven  
Université Catholique De Louvain  
Université de Liege

### Brazil

Faap - Fundação Armando Alvares Penteado  
Insper - Instituto De Ensino E Pesquisa  
Fundação Getulio Vargas - FGV

### Bulgaria

University of National and World Economy (UNWE)

### Canada

HEC Montreal  
Université de Montreal  
University of British Columbia  
Carleton University  
Université Laval  
Queen's University  
Brock University

### Chile

Universidad Adolfo Ibáñez  
Universidad de Chile

### China

Hong Kong Baptist University  
Chinese University of Hong Kong  
Fudan University  
Renmin University of China  
University of Macau  
Beijing Normal University  
The University of Hong Kong  
The University of Nottingham Ningbo

### Colombia

Pontificia Universidad Javeriana

### Croatia

University of Zagreb  
Zagreb School of Economics and Management

### Czech Republic

Masaryk University  
Prague University of Economics

### Denmark

Aarhus Universitet  
Copenhagen Business School  
University of Copenhagen

### Estonia

TalTech University  
Estonian Business School

### Finland

University of Jyväskylä  
University of Helsinki  
Aalto University  
Hanken School of Economics  
University of Tampere

### France

Essec Business School  
Iep Aix-En-Provence  
Edhec Business School  
Université Jean Moulin Lyon 3  
EMLYON Business School  
Skema Business School  
Bba - Essec  
Escp Europe  
Sciences Po - Paris  
Audencia Nantes Ecole de Management  
Icn Business School  
Neoma Business School  
Université De Strasbourg  
Université Francois Rabelais - Tours  
Université De Toulouse - Iep  
Université Catholique de Lille  
Iseeg School of Management  
Ecole De Management de Grenoble  
Lille Catholic University  
HEC School of Management  
Université de Montpellier 1  
Université Paris Dauphine  
Esc Rennes  
Em Strasbourg Business School  
Sciences Po - Bordeaux  
Université Toulouse 1 Capitole

### Germany

Freie Universitaet  
Humboldt Universitaet Zu Berlin  
Technische Universitaet Berlin  
Ruhr-Universitaet Bochum  
Bucerius Law School  
Christian Albrechts Universitaet zu Kiel  
Whu Otto Beisheim School Of Management  
Universität Konstanz  
Tum Business School - München  
European Business School (Ebs)  
Universität Zu Köln  
Universität Mannheim  
Hertie School of Governance  
Frankfurt School of Finance & Management  
University of Hamburg  
Goethe University

### Greece

Athens University of Economics and Business  
University of Thessaloniki

### Indonesia

Binus University

### Ireland

University College Dublin  
National University of Ireland, NUI Galway

### Hungary

Corvinus University of Budapest

### Israel

Interdisciplinary Center (IDC) Herzliya  
Tel Aviv University

### Japan

Hitotsubashi University  
Waseda University  
Ritsumeikan Asia Pacific University

### Latvia

Riga Graduate School of Law  
ISM University of Management and Economics

### Lithuania

Vilnius University  
Vilnius Gediminas Technical University

### Luxembourg

University of Luxembourg

### Malta

University of Malta

### Morocco

Université Internationale de Rabat  
Mohammed VI Polytechnic University of Benguerir

### New Zealand

Victoria University of Wellington

### Norway

NHH Bergen  
University of Agder  
University of Oslo  
BI Norwegian Business School  
University of Bergen

### Peru

Universidad Esan - Lima  
Universidad Del Pacifico

### Poland

Nicolaus Copernicus University Torun  
Kozminski University  
SGH Warsaw

### Portugal

Universidade Católica Portuguesa Lisboa  
Universidade Nova de Lisboa  
Univesidade do Porto  
ISEG - Lisbon School of Economics and Management

### Romania

West University of Timișoara

### Russia

MGIMO  
National Research University  
Russian Presidential Academy of National Economy  
and Public Administration - RANEPA

### Singapore

Singapore Management University - SMU

### Slovenia

University of Ljubljana

### South Korea

Yonsei University  
Sogang University

### Spain

Universidad de Alicante  
Universitat Pompeu Fabra Barcelona  
Universidad de Barcelona  
Universidad de Cantabria  
Universidad de Deusto  
Universidad Complutense de Madrid  
Universidad Francisco de Vitoria  
Universidad Pontificia Comillas  
Universidad Rey Juan Carlos  
Universidad De Murcia  
Universidad De Salamanca  
Universitat Ramon Llull  
Universidad de Valencia  
IE University  
Universidad de Navarra Universidad  
Universidad Loyola Andalucia  
Institut Barcelona d'Estudis Internacionals

### Sweden

University of Gothenburg Stockholms Universitet  
Stockholms University School of Business  
Uppsala Universitet  
University of Lund

### Switzerland

Université De Lausanne  
Universitaet Zürich  
Zhaw - School of Management & Law  
University of St. Gallen  
Graduate Institute of International and Development Studies

### Taiwan

National Chengchi University

### Thailand

Chulalongkorn University

### The Netherlands

Universiteit van Amsterdam  
Rijksuniversiteit Groningen  
Universiteit Leiden  
Universiteit Maastricht  
University College - Maastricht  
Radboud Universiteit Nijmegen  
Universiteit Van Tilburg  
Universiteit Utrecht  
Erasmus University Rotterdam  
The Hague University of Applied Sciences  
Nyenrode Business University

### Turkey

Bogazici University (Bosphorus)  
Koç University

### United Kingdom

Durham University  
University of Essex University of Leeds  
City, University of London  
University of East Anglia  
Robert Gordon University  
University of Strathclyde  
Oxford Brookes University  
University of Exeter  
University of Glasgow  
King's College London  
City University of London  
Aston University  
University of Edinburgh  
Swansea University  
University of Westminster  
Newcastle University

### Uruguay

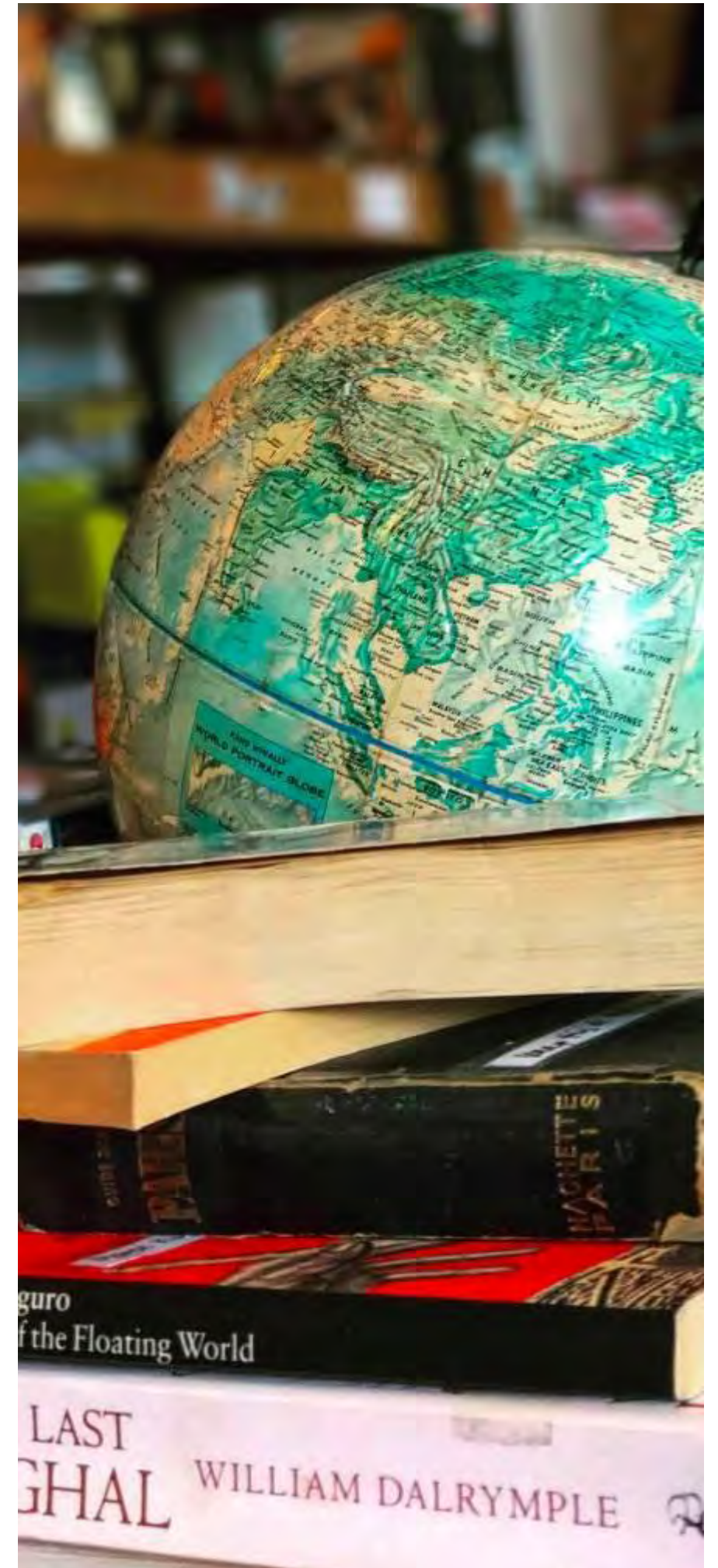
University of Montevideo

### USA

University of South Carolina  
Marquette University  
Northeastern University  
Suffolk University  
George Mason University  
University of New Mexico  
George Washington University

### Vietnam

Hanoi University  
Foreign Trade University





**Luiss**

Student Mobility

Viale Romania 32,  
00197 Roma

T 06 85 22 56 42  
relint@luiss.it

[www.luiss.edu/students/erasmus-and-exchange-students](http://www.luiss.edu/students/erasmus-and-exchange-students)