

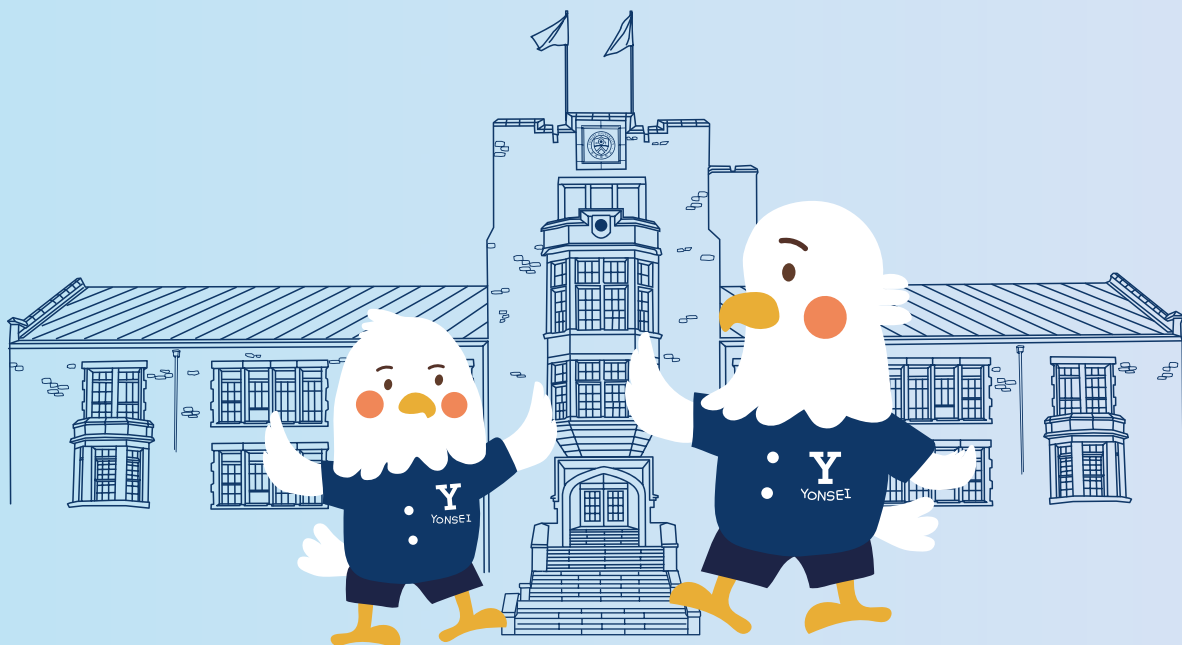
2026

Yonsei International Summer School

Get ready for an unforgettable summer!

4 week: June 29 ~ July 22, 2026

6 week: June 29 ~ August 5, 2026



YONSEI UNIVERSITY

YONSEI INTERNATIONAL SUMMER SCHOOL

About Yonsei

Founded in 1885 by Christian missionaries, Yonsei University is Korea's oldest private university, renowned for cultivating leaders dedicated to truth and freedom. Our alumni network of over 381,418 global leaders exemplifies our mission to make meaningful contributions to humanity.

With 6,734 esteemed faculty members advancing groundbreaking research across diverse academic disciplines, Yonsei is home to 20 graduate schools, 28 colleges, and 175 research institutes. Our extensive international network, spanning 700+ partner institutions in 79 countries, underscores our commitment to global education and cultural exchange. This global engagement enriches the academic experience, empowering students to excel in an interconnected world.

2026 YISS

QS World University Rankings 2026

50th

QS Asian University Rankings 2025

9th

QS Asian University Rankings 2025

1st

University in
Asian Private
Universities

University Impact Rankings 2024

1st

The Global Impact
for Industry,
Innovation, and
Infrastructure





2026 YISS APPLICATION AND FEES

Program Period

- ❶ 4 week : June 29-July 22
- ❷ 6 week : June 29-Aug 5

Eligibility & Application Materials

- ❶ **YISS welcomes applications from students currently enrolled in an accredited college or university.**
 *Required document: Official transcript with GPA over 2.0/4.0
 *Freshmen who have not yet received their transcripts can submit a Certificate of Enrollment instead.
- ❷ **High school seniors who have been accepted to an accredited college or university can apply.**
 *Required document: Official Letter of Admission from accredited college or university

Application Procedures

- ❶ Create an account and complete online application on YISS website (<https://summerapply.yonsei.ac.kr/>)
- ❷ Upload required documents on the application
- ❸ Pay the application fee
- ❹ Wait for admission review to be done
- ❺ Receive acceptance letter via email
- ❻ Complete enrollment by paying the tuition fee and other fees
- ❼ Apply for On-Campus housing (optional)
- ❽ Get ready for your summer journey!

Fees

Mandatory	Application Fee	100,000 KRW			
	Tuition		General Tuition	Early Bird Promotion	
		1 Course	2,020,000 KRW	1,818,000 KRW	1. 1st Round Course Registration 2. Chance to apply for On-Campus Housing
		2 Courses	3,630,000 KRW	3,267,000 KRW	
		3 Courses	4,130,000 KRW	3,717,000 KRW	
Optional	On-Campus Housing	6-week	1,092,000 KRW		SKG House Double Room(fees may vary according to dorm type)
		4-week	728,000 KRW		

*Early Bird acceptees will have priority to apply for on-campus housing. Housing is allocated on a first-come, first-serve basis. Due to limited availability, students are strongly encouraged to apply immediately during the dormitory reservation period.
 *Fees are subject to change without notice.

Scholarships (Fee-Paying Students Only)



Scholarship	Eligibility	Benefit
APRU&AERU Associate University Scholarship	Enrolled in the APRU & AERU Associate Universities	100,000 KRW
Kim Suk-Hi & Do-Sim Scholarship	Need-based	1,000,000 KRW for tuition + 900,000 KRW for housing
Yonsei Alumni Scholarship	Students whose parents are graduates of Yonsei University	300,000 KRW

On-Campus Housing

Early Bird acceptees will have priority to apply for on-campus housing. Due to limited availability, students are strongly encouraged to apply immediately during the dormitory reservation period. For more information, please visit the housing website(dorm.yonsei.ac.kr/en)



DISCOVER YOUR PASSION IN OVER 100 COURSES

List of Courses (Students may choose to combine 6-week courses and 4-week courses.)

***The courses are opened similar year to year, however please refer to the YISS website for the final Course list.**

6-Week Courses

Arts & Humanities

- SHORT STORIES INTO FILM ACROSS THE GLOBE
- INTRODUCTORY PHILOSOPHY
- ASIAN AMERICAN LITERATURE

Business & Economics

- BUSINESS MANAGEMENT AND REAL WORLD PRACTICE
- ECONOMETRICS (1)
- ENTREPRENEURSHIP AND MANAGEMENT
- GAME THEORY AND APPLICATIONS
- GLOBAL SUPPLY CHAIN MANAGEMENT
- INTERNATIONAL HUMAN RESOURCE MANAGEMENT
- INTERNATIONAL MANAGEMENT
- INTRO TO ENTREPRENEURSHIP AND VENTURE CAPITAL
- INTRODUCTION TO STATISTICS
- LAW AND ECONOMICS
- MACROECONOMICS
- MARKETING
- MICROECONOMICS
- OPERATIONS MANAGEMENT
- PRINCIPLES OF MACROECONOMICS
- PRINCIPLES OF MICROECONOMICS
- STRATEGIC MANAGEMENT

East Asian Studies

- ARTS OF ASIA
- CULTURAL TRADITIONS IN EAST ASIA

Korean Language

- KOREAN LANGUAGE LEVEL 1 TO 8 (KOREAN LANGUAGE INSTITUTE)
- KOREAN(1)

Korean Studies

- BRANDING KOREA: STRATEGIC BRAND COMMUNICATION
- CONTEMPORARY KOREAN CULTURE & THE KOREAN WAVE
- DIGITAL MEDIA AND SOCIETY IN KOREA
- GHOSTS AND THE SUPERNATURAL IN LIT FILM AND K-DRAMA
- GLOBAL KOREAN MUSIC AND CULTURE: FROM ARIRANG TO K-POP
- INTERNATIONAL POLITICS OF THE KOREAN PENINSULA
- INTRODUCTION TO KOREAN STUDIES
- K-CINEMA VS. HOLLYWOOD
- KOREAN AMERICAN HISTORY
- KOREAN CINEMA
- KOREAN CULTURE AND FASHION FROM GLOBAL PERSPECTIVES
- KOREAN DEVELOPMENT
- K-WAVE IN INTERNATIONAL CONSUMER INSIGHT
- MODERN KOREAN HISTORY
- THE UN, INTERNATIONAL CIVIL SOCIETY, AND NORTH KOREAN HUMAN RIGHTS
- TOPICS IN KOREAN CULTURE: GLOBALIZATION AND MULTICULTURALISM

Science & Technology

- ADVERTISING AND MEDIA TECHNOLOGY
- GENETICS
- HUMAN BODY, DISEASES, AND RESEARCH
- INTRODUCTION TO COMPUTER GRAPHICS
- INTRODUCTION TO MACHINE LEARNING
- ORGANIC CHEMISTRY(1)
- SCIENCE MEDICINE AND SOCIETY

Social Sciences

- AI AND SOCIETY
- ASIAN POLITICS AND SOCIETY
- BASIC PRINCIPLES OF U.S. LAW
- CULTURAL PSYCHOLOGY RESEARCH
- DEVELOPMENTAL PSYCHOLOGY
- INTRODUCTION TO INTERNATIONAL RELATIONS
- INTRODUCTION TO PSYCHOLOGY
- LIFESPAN DEVELOPMENTAL PSYCHOLOGY: HUMAN DEVELOPMENT IN CULTURAL CONTEXT
- MEDIA COMMUNICATIONS IN KOREA
- MEDIA PSYCHOLOGY
- REAL LAW AND ORDER
- SOCIAL PSYCHOLOGY

4-Week Courses

Korean Studies

- KOREAN POPULAR CULTURE AND KOREAN WAVE
- KOREAN FASHION TREND & MANAGEMENT
- E-SPORTS AND DIGITAL MEDIA CULTURE
- KOREAN CINEMA
- KOREAN FOOD AND CULTURE
- K-ARCHITECTURE: UNDERSTANDING KOREA THROUGH THE LENS OF

Architecture

- ARCHITECTURE IN SEOUL
- K-ART IN THE MODERN AND CONTEMPORARY ERA
- CONTEMPORARY KOREAN CULTURE & THE KOREAN WAVE
- MODERN KOREAN LITERATURE

Korean Language

- KOREAN(1)

Science & Technology

- CG & AI-DESIGN EXERCISE (Video Lecture)
- GENERATIVE AI & GENERATIVE DESIGN(Video Lecture)

Social Sciences

- COMPARATIVE POLITICS
- SOCIAL PSYCHOLOGY

* Highlighted Courses are Video Lecture (Online Only)

* Video Lecture (Online Only) Courses are pre-recorded video lecture provided on LearnUS(Yonsei University's Online Learning Platform), which can be watched at your convenience (not in a real-time)

*6-Week Program registered students can also select from both 6-Week and 4-Week courses.

Course Load

Minimum: 1 Course (3 Credits) **Maximum:** 3 Courses (9 Credits)

*Internship 1 Course (2 Credits)

Credit Transfer



All YISS courses are credit-bearing courses. Credits earned at YISS are transferable to most institutions outside of Korea. For credit transfer, students are advised to consult and obtain approval from their academic advisors of home institutions in advance. Credit transferability of a particular YISS course depends solely on home institutions' policies.



WHAT'S SPECIAL IN YISS

2025 YISS Statistics



Faculty



Courses



Students



Internship
Participants

55 32 Overseas professors
23 Yonsei professors

100/7 100 Courses in
7 Different areas

2,137 76 41 Corporations
35 Research Centers/Labs

Academic Excellence and Diversity of Classes

YISS offers a wide range of courses, including the arts, culture, humanities, Asian and Korean studies, international politics and economics, global management, science and technology, and environmental studies. Leading experts and professors from Yonsei and institutes worldwide teach courses at YISS.

Yonsei Summer Internship Program (YSIP) : Corporate & Research

YISS offers various internship positions exclusively for YISS students. Through partnerships with companies and research centers, students can explore and experience real working life.

The Corporate Internship offers YISS students direct exposure to global corporate settings in the heart of Seoul, Korea.

The Research Internship provides the opportunity to participate in research projects or work as an intern in research centers or organizations at Yonsei University.

These internships are only available to students registered with YISS. YSIP is organized as an unpaid, pass/non-pass academic course. Participants who complete the YSIP successfully will earn 2 academic credits. To apply for the YSIP, students are required to be enrolled in at least two courses, including YSIP.

Extracurricular Activities

The exciting learning environment of YISS continues outside the classroom with a variety of extracurricular activities, including a DMZ tour, Korean cooking class, and many more. YISS offers students an introduction to Korean history, culture, and scenic landscapes, along with opportunities to meet and interact with other students.

Academic Calendar

- Application Period**
January 12 (Mon) - May 7 (Thu), 2026, 16:00 KST
- Internship Application Period**
February 3 (Tue) - March 17 (Tue), 2026 16:00 KST
- Early Bird Application Due**
March 12 (Thu), 2026, 16:00 KST
- Early Bird / Internship Tuition Payment Due**
March 19 (Thu), 2026, 16:00 KST
- 1st Course Registration (For Early Bird)**
April 22 (Wed) - April 23 (Thu), 2026
- General Application Due**
May 7 (Thu), 2026, 16:00 KST
- General Tuition Payment Due**
May 14 (Thu), 2026, 16:00 KST
- Internship Results**
First Result: April 16 (Thu), 2026 (tentative)
Second Result: April 30 (Thu), 2026 (tentative)
- 2nd Course Registration(For All)**
June 4 (Thu) - June 5 (Fri), 2026
- Internship Orientation**
June 12 (Fri), 2026, 14:00 KST
- Internship Period**
June 15 (Mon) - August 4 (Tue), 2026
- Dorm Check-In**
June 25 (Thu), 2026
- YISS Orientation**
June 26 (Fri), 2026, 10:00 KST
- YISS Term Begins**
June 29 (Mon), 2026
- YISS Term Ends**
4-Week Program : July 22 (Wed), 2026
6-Week Program : August 5 (Wed), 2026
- Dorm Check-Out**
4-Week Program : July 23 (Thu), 2026
6-Week Program : August 6 (Thu), 2026



The Center of Traditional Culture _The Heart of Seoul

Seoul has been ranked No.1 student city in the world in the QS best Student Cities 2026.

Yonsei University is located in the heart of Seoul, the capital of South Korea, where you can experience a rich variety of traditional Korean culture. In addition to Gwanghyewon, Korea's first Western medical institution, which is situated on campus, there are other nearby historical sites where you can explore the 500-year legacy of the Joseon Dynasty, including Deoksugung, Changdeokgung, and Gyeongbokgung palaces. These landmarks are only 15 minutes away from campus, offering students easy access to Korea's cultural heritage. The New York Times has also named Seoul as one of the top three "must-visit" cities in the world.

The Center of Youth Culture _Sinchon

The Sinchon area around Yonsei campus is home to one of the most vibrant and exciting college towns in Seoul. With a rich array of facilities and activities, Sinchon creates a unique culture of its own and attracts a young population from around the city and the country. This is where one can mingle with the youth of Korea.



YISS OFFICE

50 Yonsei-ro, Seodaemun-gu, Seoul, 03722,
Republic of Korea
[Office Hours] Mon~Fri 9:00~12:00 & 13:30~17:00
T (82-2)2123-3535
E summer@yonsei.ac.kr
W <https://summer.yonsei.ac.kr>

WOOJUNGWON HOUSE

[Office Hours] Mon~Fri 9:00~12:00 & 13:30~17:00
E dormys@yonsei.ac.kr
W <https://dorm.yonsei.ac.kr/en>

SK GLOBAL & INTERNATIONAL HOUSE

[Office Hours] Mon~Fri 9:00~12:00 & 13:30~17:00
E skghouse@yonsei.ac.kr / ihouse@yonsei.ac.kr
W <https://dorm.yonsei.ac.kr/en>

Social Media



@yonseistudyabroad

